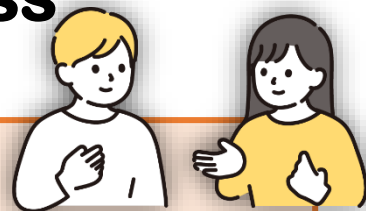


**HANASOU
NIHONGO**

Japanese conversation class



What is “Hanasou Nihongo”?

- The class for the people from other countries who barely understand Japanese. Learn Japanese as interacting with the Japanese partners.
- The aim of the lesson is to be able to use easy phrase like greeting and self introduction.

When : June 23th ~ September 1st 1:30pm-3pm

Every Sunday (except August 11th)

Total 10 lessons

Where : Kokusai Plaza room201

**Who : People over 16 and live or work in Kariya city.
People who barely understand Japanese conversation.**

Capacity : 15 people Fee: Free

**How : Fill out the form on the slip side and submit it to KIFA office between
9:00am to 5:00pm by him/herself who want to participate in the class.
We'll briefly check your Japanese conversation level.**

Kariya International Friendship Association (KIFA)

刈谷市国際交流協会

Kariyashi toyo cho 1-32-2 shimin koryu center 2F

Open 9:00-17:00

Phone 0566-62-1209

We are closed on Mondays

Email kokusai@katch.ne.jp

English



文部科学省

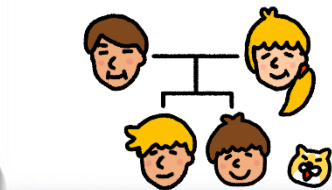
MINISTRY OF EDUCATION,
CULTURE, SPORTS,
SCIENCE AND TECHNOLOGY-JAPAN

文部科学省 令和6年度「地域日本語教育の総合的な体制づくり推進事業」活用



KARIYA INTERNATIONAL FRIENDSHIP ASSOCIATION

Go to
slip side→



ばんきょうしたいこと

こまていこと

い

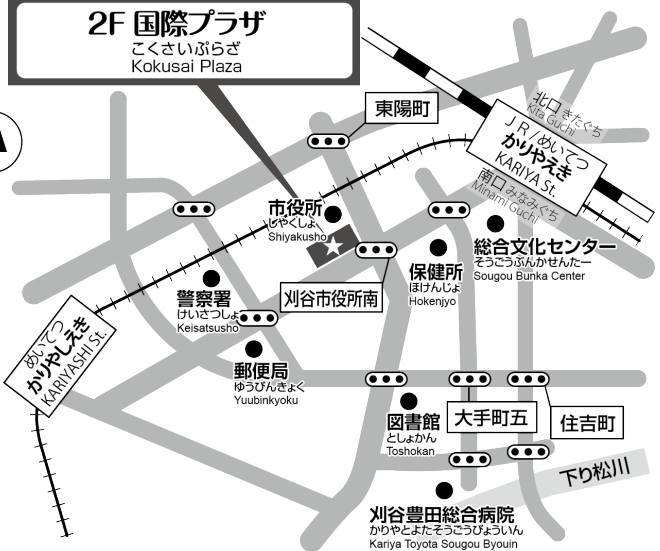
とる



Register at
Kokusai Plaza
(next to the city office)

市民交流センター
しみんこうりゆうせんたー
Shimin Koryu Center

2F 国際プラザ
こくさいぷらざ
Kokusai Plaza



Hanasou Nihongo Application form

Name		Birth	Year	/	Month	/	Day
Address		Country					
Phone	() -	Work place					
Email address	@	Residence status					

We won't use the personal information above for any other purpose.